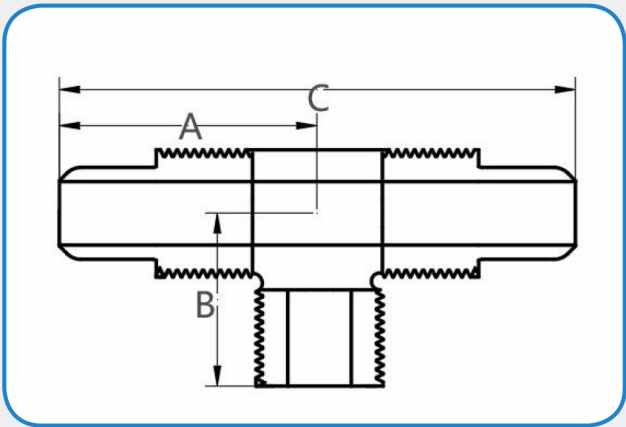


FD8中间外牙三通

FD8 MIDDLE EXTERNALTOOTHTEE

产品线图

Product line diagram



产品材质

Product material

- PFA
- 接口形式：扩口连接
- 最高使用温度：205°C
- 最高使用压力：0.75MPa
- 传送介质：液体
- *螺帽有PFA和PVDF材质可选
- *PVDF不适用于温度超过120°C的应用

- PFA
- Interface form: flared connection
- Maximum operating temperature: 205°C
- Maximum operating pressure: 0.75MPa
- Transmission medium: liquid
- *The nuts are available in PFA and PVDF materials
- *PVDF is not suitable for applications with temperatures exceeding 120°C

产品特性

Product characteristics

专业应用于高纯度的半导体行业，也适合于超纯水或腐蚀性化学物质，在-40°C至200°C之间可维持良好的尺寸稳定性和耐腐蚀性，并具有良好的机械特征，抗磨损。

Professional application in the high-purity semiconductor industry, also suitable for ultrapure water or corrosive chemicals. It can maintain good dimensional stability and corrosion resistance between -40°C and 200°C, and has good mechanical characteristics and wear resistance.

产品参数

Product parameter

产品名称	管外径1	管外径2	通径1 (mm)	通径2 (mm)	A (mm)	B (mm)	C (mm)
3/8*3/8牙*3/8三通	3/8	3/8牙	6.5	6.5	40.3	27.8	80.6
3/4*3/4牙*3/4三通	3/4	3/4牙	16.1	16.1	50.4	36	100.8



法宝公众号



微信号

网址: <http://www.mgwflex.cn>

邮箱: zx@mgwflex.com market@mgwflex.com

地址: 广州市增城区宁西街创誉路74号自编A1-4004、4003A

Address: No. 74 Chuangyu Road, Ningxi Street, Zengcheng District, Guangzhou City, China